

Vehicle Maintenance Schedule

3 Months / 5,000 Kms.	6 Months / 10,000 Kms.	9 Months / 15,000 Kms.	12 Months / 20,000 Kms.	15 Months / 25,000 Kms.
Express Oil Change Service <i>(Includes 15 Point Inspection)</i>	M2 / Semi-Annual Service <i>(Includes Lube, Oil, Filter & Tire Rotation)</i>	Express Oil Change Service <i>(Includes 15 Point Inspection)</i> * Fuel System Service	M2 / Semi-Annual Service <i>(Includes Lube, Oil, Filter & Tire Rotation)</i> * Brake Maintenance Service (4 Wheels)	Express Oil Change Service <i>(Includes 15 Point Inspection)</i>
<i>From \$39.95</i>	<i>From \$99.95</i>	<i>From \$53.90</i>	<i>From \$219.85</i>	<i>From \$39.95</i>
18 Months / 30,000 Kms.	21 Months / 35,000 Kms.	24 Months / 40,000 Kms.	27 Months / 45,000 Kms.	30 Months / 50,000 Kms.
M2 / Semi-Annual Service <i>(Includes Lube, Oil, Filter & Tire Rotation)</i> * Emission Service * Total Wheel Alignment	Express Oil Change Service <i>(Includes 15 Point Inspection)</i>	M2 / Semi-Annual Service <i>(Includes Lube, Oil, Filter & Tire Rotation)</i> * Brake Fluid Replacement * Brake Maintenance Service (4 Wheels)	Express Oil Change Service <i>(Includes 15 Point Inspection)</i> * Fuel System Service	M2 / Semi-Annual Service <i>(Includes Lube, Oil, Filter & Tire Rotation)</i> * Power Steering Flush * Throttle Body Service
<i>From \$309.85</i>	<i>From \$39.95</i>	<i>FWD From \$309.80</i>	<i>From \$53.90</i>	<i>From \$259.85</i>
33 Months / 55,000 Kms.	36 Months / 60,000 Kms.	39 Months / 65,000 Kms.	42 Months / 70,000 Kms.	45 Months / 75,000 Kms.
Express Oil Change Service <i>(Includes 15 Point Inspection)</i>	M2 / Semi-Annual Service <i>(Includes Lube, Oil, Filter & Tire Rotation)</i> * Brake Maintenance Service (4 Wheels) * Emission Service * Total Wheel Alignment	Express Oil Change Service <i>(Includes 15 Point Inspection)</i>	M2 / Semi-Annual Service <i>(Includes Lube, Oil, Filter & Tire Rotation)</i>	Express Oil Change Service <i>(Includes 15 Point Inspection)</i> * Fuel System Service
<i>From \$39.95</i>	<i>From \$429.75</i>	<i>From \$39.95</i>	<i>From \$99.95</i>	<i>From \$53.90</i>
48 Months / 80,000 Kms.	51 Months / 85,000 Kms.	54 Months / 90,000 Kms.	57 Months / 95,000 Kms.	60 Months / 100,000 Kms.
M2 / Semi-Annual Service <i>(Includes Lube, Oil, Filter & Tire Rotation)</i> Automatic Transmission Service * Brake Fluid Replacement * Brake Maintenance Service (4 Wheels) Differential & Gear Service 4X4 Drive Line Service	Express Oil Change Service <i>(Includes 15 Point Inspection)</i>	M2 / Semi-Annual Service <i>(Includes Lube, Oil, Filter & Tire Rotation)</i> * Emission Service * Total Wheel Alignment	Express Oil Change Service <i>(Includes 15 Point Inspection)</i>	M2 / Semi-Annual Service <i>(Includes Lube, Oil, Filter & Tire Rotation)</i> Coolant System Flush Fuel Filter Replacement * Brake Maintenance Service (4 Wheels) * Power Steering Flush * Throttle Body Service
<i>FWD From \$459.75</i> <i>RWD From \$607.70 4X4 From \$745.60</i>	<i>From \$39.95</i>	<i>From \$309.85</i>	<i>From \$39.95</i>	<i>From \$498.75</i>

* Dealer Recommended Services. Some models may require more or less labour and/or parts. Prices apply to most models. Environmental charges may apply to some services. All taxes extra. Oil Life Monitor allows you to schedule your oil changes as indicated by display. Prices subject to change without notice.

Johnbear

WWW.JOHNBEAR.COM



GMC



JOHN BEAR HAMILTON

1200 Upper James St., Hamilton, ON. L9C 3B1

(905) 575-9400

1-800-654-8598

JOHN BEAR ST. CATHARINES

333 Lake Street, St. Catharines, ON. L2M 6P6

(905) 934-2571

1-800-945-7509

JOHN BEAR NEW HAMBURG

100 Heritage Drive, New Hamburg, ON. N3A 2J4

(519) 662-1200

1-888-662-1217

www.johnbear.com



SATURN

authorized
service
provider

YOUR NEXT SERVICE IS DUE ON:

Date:

Kms:

Service Advisor:

Goodwrench Oil Change Service

(Includes 15 Point Inspection)

Prolongs engine life.

(Essential for warranty Validation).

- change engine oil and filter with new quality G.M. approved parts
- includes "GOODWRENCH" service report
- reset the "Oil Life Monitor" light if applicable



From \$39.95
Synthetic Oils Available.

M2 / Semi-Annual Service

(Includes Lube, Oil, Filter & Tire Rotation)

Basic Maintenance required by "General Motors"

For your safety and peace of mind

- a multi point inspection by G.M. trained technician
- weather strip lubrication
- fluid top-up



\$99.95

* Fuel System Service

Maintains fuel efficiency and engine performance.

- optimize injector spray pattern by dissolving fuel varnish build-up on the injector tips
- use "Hydrophilic" (water loving) cleaning agent to identify and then suspend any moisture (mix the water and gas) present in the fuel tank for removal through the exhaust, to help prevent corrosion and ice formation



\$13.95

* Fuel Injector System Flush

Corrects injector spray pattern improving fuel efficiency and engine performance.

- administer a cleaning agent directly through the fuel rail (Using a deposit control station) to provide maximum cleaning to this important performance related area



\$129.95

* Emission Service

Maintains optimum performance, fuel efficiency and cleaner emissions.

- inspect emission & performance items
- administer a combustion chamber cleaner through the air intake system to clean intake valve deposits from engine
- includes a fuel system service to reduce condensation in the fuel system and maintain cleanliness of injectors

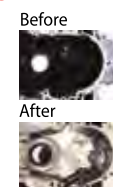


\$89.95

* Throttle Body Service

Improves idle quality and throttle response

- use a cleaning agent to clean the throttle throat area and behind the plate



\$69.95

* Brake Fluid Replacement

An important safety and critical time interval service

- inspect brake fluid for signs of moisture or contamination
- flush old out and replace with new quality G.M. approved fluid
- bleed system of air
- inspect callipers and wheel cylinders
- inspect brake pedal for proper positioning
- road test



\$89.95

* Brake Maintenance Service

(4 Wheels)

Ensures safe vehicle operation and peace of mind.

- use a safe brake cleaner that dissolves and removes the brake dust, oil and grease from brake components
- check for proper caliper piston movement
- deglaze pads to improve braking performance
- check parking brake operation



\$119.90

* Spark Plug Replacement

Ensures easy starting and optimum performance.

- inspect old plugs for discoloration and carbon deposits
- replace with G.M. quality parts
- inspect wires and all applicable hardware



Replacement from \$149.00

Automatic Transmission Service

Prolongs transmission life: "A critical time interval service."

- remove and clean the transmission pan and check for any metal deposits located on the magnetic pick-up
- remove and replace the transmission filter and fluid
- add a seal conditioner for extra protection



From \$149.95

Cooling System Flush

Ensures optimum heating and cooling efficiency

- perform a complete inspection of the cooling system
- attach the necessary equipment to FLUSH and evacuate the ENTIRE cooling system of old coolant and refill it with new
- add a coolant conditioner for additional protection against acid formation



\$119.00

* Power Steering Flush

Promotes long life of steering gear and pump.

- use a safe cleaner to dissolve and suspend varnish and harmful deposits that form in your vehicle's power steering system
- flush your vehicle's entire steering system of all old fluid and contaminants and install new high- tech fluid to protect against noise, wear and leakage in the system



\$89.95

BENEFITS

of following a comprehensive preventative maintenance schedule.

Protects your investment.

- Prevents unexpected breakdowns and repair surprises.
- Promotes higher resale value.

Optimizes safety, reliability and performance.

- Reduces driveability problems.
- Assures prompt stop and go power.

Promotes better fuel efficiency.

- Reduces gas expenses by giving more Km. per litre.

Promotes a cleaner environment.

- Reduces harmful exhaust emissions.

Ensures warranty validation.